



GD300-2 2V300AH GD SERIES-Deep Cycle Battery

Applications

- ◆ Electric tools
- ◆ Vehicle in place of walking
- ◆ Lawn mowers
- ◆ Golf trolleys and golf cart
- ◆ Portable apparatus, lights and instruments;
- ◆ Electric toys
- ◆ Illumination light
- ◆ Fire alarms
- ◆ Portable power
- ◆ Wheelchairs
- ◆ Solar energy systems
- ◆ Marine
- ◆ RV
- ◆ Medical equipments.

ISO 9001	ISO 14001	OHSAS 18001	TLC
CE	RoHS	UL	PV Battery

Specification

Nomial Voltage	2V
Nomial Capacity(10HR)	300.0AH @10hr-rate to 1.80V per cell @25°C
Dimension	Length 170±2mm (6.69 inches)
	Width 150±2mm (5.91 inches)
	Container Height 328±2mm (12.91 inches)
	Total Height (with Terminal) 350±2mm (13.78 inches)
Approx Weight	Approx 16.8 Kg (37.03 lbs)
Terminal	T11
Container Material	ABS
Max. Discharge Current	1500A (5s)
Internal Resistance	Approx 0.75mΩ
Operating Temp.Range	Discharge : -20~60°C (-4~140°F)
	Charge : 0~50°C (32~122°F)
	Storage : -20~60°C (-4~140°F)
Nominal Operating Temp. Range	25±5°C (77±41°F)
Float charging Voltage	2.27 to 2.3 VDC/unit Average at 25°C
Recommended Maximum Charging Current Limit	60 A
Equalization and Cycle Service	2.43 to 2.47 VDC/unit Average at 25°C
Capacity affected by Temperature	40°C (104°F) 103%
	25°C (77°F) 100%
	0°C (32°F) 86%
Self Discharge	JYC GD series battery may be stored for up to 6 months at 25°C(77°F) and then a freshening charge is required. For higher temperatures the time interval will be shorter.

Constant Current Discharge Characteristics: A (25°C)

F.V/Time	15MIN	30MIN	1HR	2HR	3HR	4HR	5HR	6HR	8HR	10HR
1.60V	407.3	300.4	187.3	114.9	85.59	61.41	53.75	48.26	38.95	31.25
1.65V	387.3	288.4	184.9	110.7	81.99	59.25	53.21	47.09	37.21	30.95
1.70V	361.2	271.9	181.3	108.9	80.20	58.71	52.44	45.93	36.63	30.65
1.75V	320.6	244.7	167.0	102.9	76.01	55.48	51.77	43.61	35.47	30.32
1.80V	276.0	222.9	157.4	98.15	73.02	54.94	50.87	43.02	34.88	30.04
1.85V	233.4	200.6	145.4	92.77	69.43	50.63	47.88	40.70	33.14	28.21

Constant Power Discharge Characteristics: W(25°C)

F.V/Time	15MIN	30MIN	1HR	2HR	3HR	4HR	5HR	6HR	8HR	10HR
1.60V	713.1	547.4	348.6	215.0	159.5	115.4	106.9	93.11	74.13	62.26
1.65V	694.4	544.5	346.7	211.9	156.4	113.7	105.9	91.92	73.50	61.67
1.70V	656.0	515.3	343.3	208.8	154.0	113.2	104.6	89.78	72.37	61.30
1.75V	584.3	464.4	322.0	197.7	148.5	107.6	103.1	85.36	70.09	60.68
1.80V	505.7	423.7	306.2	188.8	142.3	107.1	101.3	84.35	68.96	60.18
1.85V	431.3	382.0	284.1	178.7	135.6	99.17	95.62	79.91	65.53	56.70

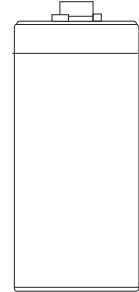
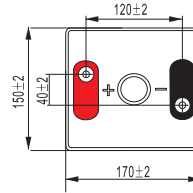
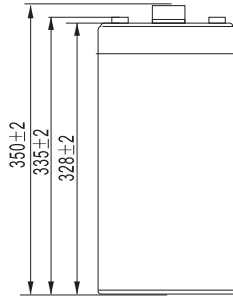
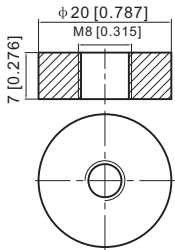
Note The above data are average values, and can be obtained with 3 charge/discharge cycles. These are not minimum values.



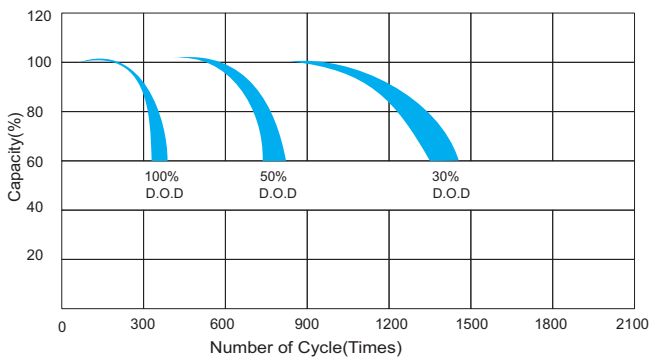
GD300-2 2V300AH GD SERIES-Deep Cycle Battery

Dimensions

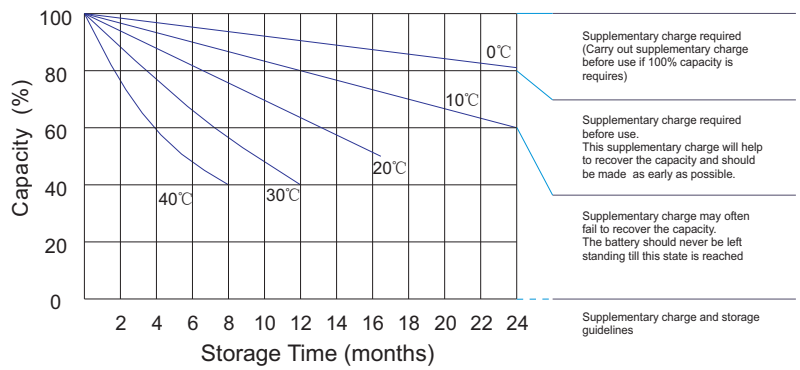
T11 Terminal Unit: mm [inches]



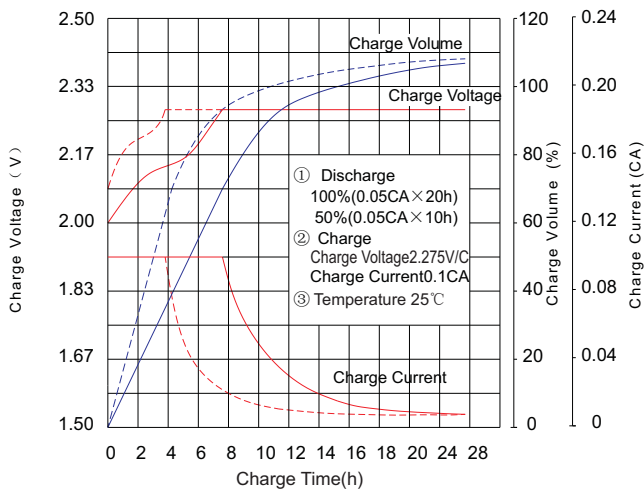
Life characteristics of cyclic use



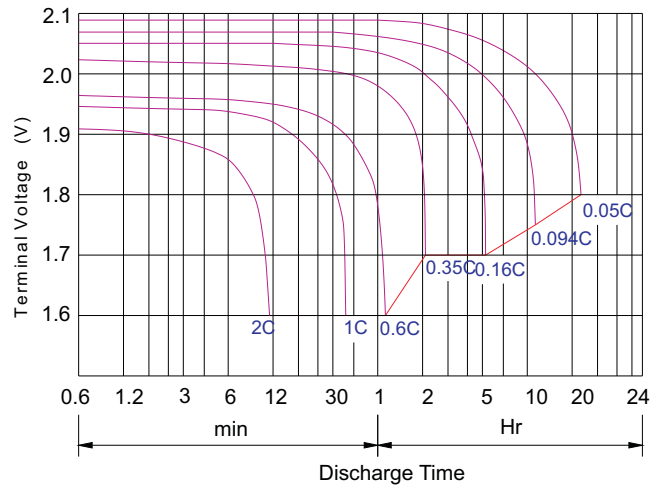
Storage characteristic



Charge characteristic Curve for standby use



Discharge characteristic Curve



JYC GD BATTERIES

This information is generally descriptive only and is not intended to make or imply any representation, guarantee or warranty with respect to any cells and batteries. Cell and battery designs/ specification are subject to modification without notice. Contact JYC for the latest information.